



Protect. Enhance. Outperform.

ARCHITECTURAL FINISHES

ACR Textured Metallic

COLOUR GUIDE



Durex[®]

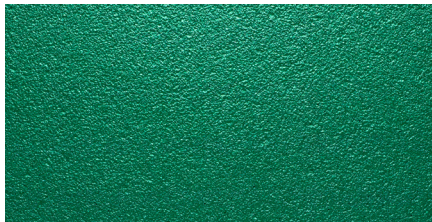
ACR Textured Metallic

Durex[®] ACR – TEXTURED METALLIC is ideal for creating distinctive architectural features on exterior/interior wall surfaces and can be applied on new and existing buildings. It provides a very flat textured, yet sparkling surface, incorporating reveals and control joints, providing the designer the flexibility to replicate the appearance of panelized metallic façades.

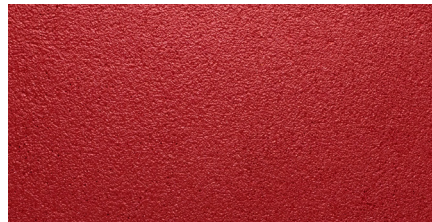


COLOUR:
Metallic Mist

Printed samples represent actual finish colours as closely as possible. Colour appearance may vary by texture, lighting and method of application. Always request a textured sample before ordering.



Tru Green - KG



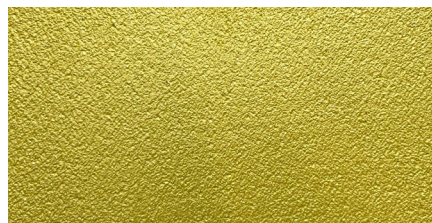
Neon Red - KG



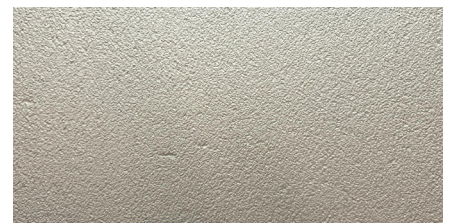
Bermuda Blue - KG



Exotic Violet - KG



Bright Yellow - KG



Washington White



Light Silver



Silver Dollar



Silver



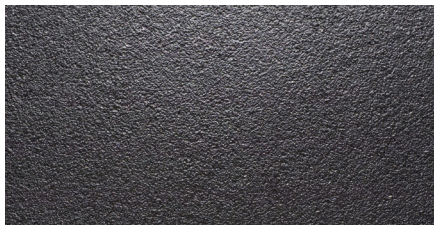
Dark Silver



Cosmic Grey



NS Char Grey



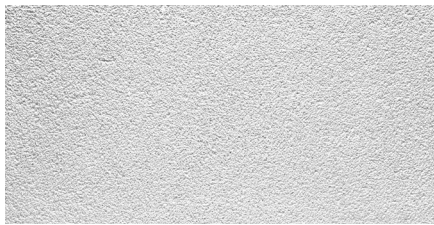
Charcoal Grey



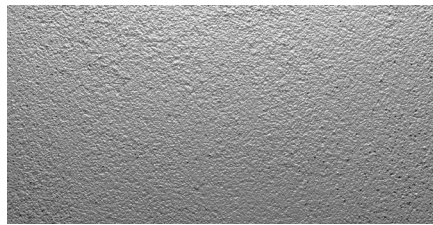
Black Lab



Black Magic



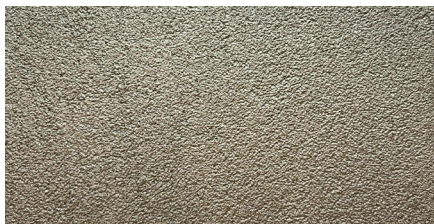
Platinum



Metallic Mist



Mocca-cino



Tarnished Bronze



Bronze



Copper



Burnt Copper



Gold



Brass

Application Guide

Ensure proper application of ACR Textured Metallic

ACR SMOOTH COAT APPLICATION

Apply Durex® ACR-Smooth Coat, using a stainless steel trowel in a minimum of 2-coat application with the first coat allowed to harden and cure prior to the application of successive coats (if required).

ACR TEXTURE PRIMER APPLICATION

Apply Durex® ACR- Primer Coat in 1-coat application using a brush, roller or spray and allow to dry.

DUREX® RUSTICO APPLICATION

Durex® Rustico is applied over Durex® ACR-Primer Coat using a steel trowel to one panel area at a time. While material is still wet lightly float with a plastic float to an even texture throughout. Allow to fully dry before application of final coat.

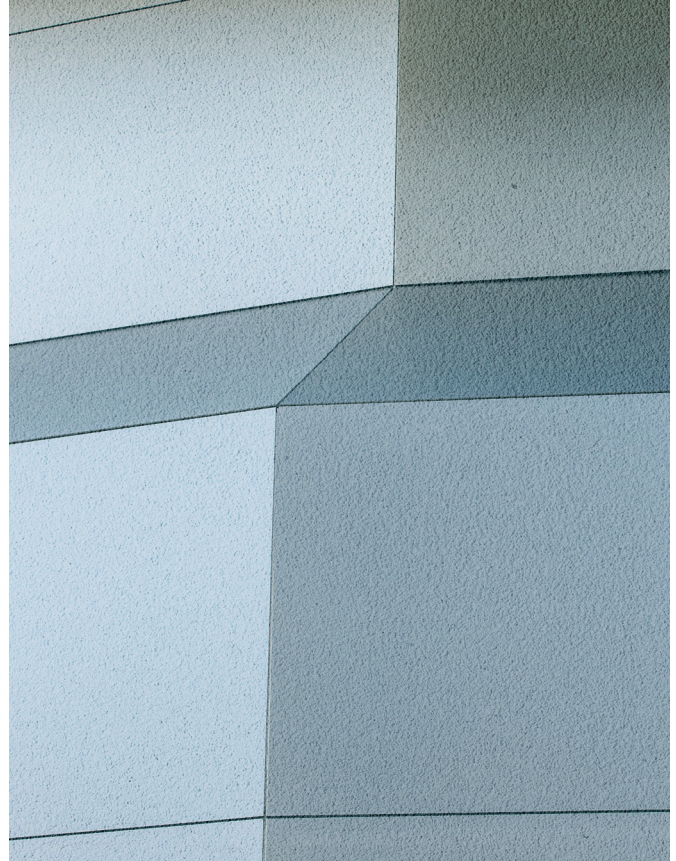
NOTE: The Durex® Rustico sand grain texture has been selected to create the ideal textured substrate for the Durex® Cromatex metallic finish. Other textures can be substituted, if desired. Contact your Durabond Representative for more specific recommendations.

DUREX® CROMATEX APPLICATION

Apply 2 individual coats of Durex® Cromatex, metallic finish coat using an airless spray. Allow each coat to dry prior to the application of the successive coat. A minimum of 2 coats are recommended, but for a finer finish additional individual coats can be applied.

Best results are achieved when the Durex® Cromatex is applied by spray. It can also be applied by low pile roller or fine bristle brush, however such an application will require more skill and care in order to achieve the desired finish. In such cases a sample application shall be conducted to ensure that the desired finish is achieved.

NOTE: The Durex® ACR TEXTURED METALLIC is a high quality fine accent finish. Best results can only be achieved when the applications are conducted by trained skilled applicators. The enclosed short application procedures are for guideline purposes only and are not intended to be detailed instructions for un-trained applicators. Consult with Durabond Representatives for more specific recommendations.



DURAbond 

TORONTO OFFICE

55 Underwriters Road, Toronto, ON M1R 3B4
T (416) 759-4474 | F (416) 759-4470

MISSISSAUGA OFFICE

6178 Netherhart Road, Mississauga, ON L5T 1B7
T (905) 565-9283 | F (905) 565-9365

WESTERN CANADA OFFICE

14604 124 Ave NW, Edmonton, AB T5L 3B3
T (780) 451-6364 | F (780) 453-9056

TOLL FREE

TF 1 877 387-2266 | E info@durabond.com

durabond.com